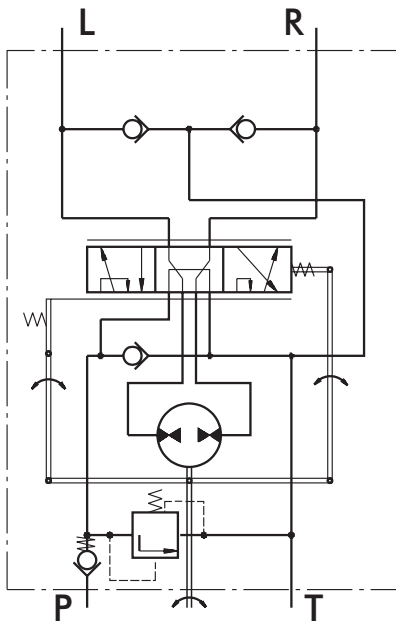


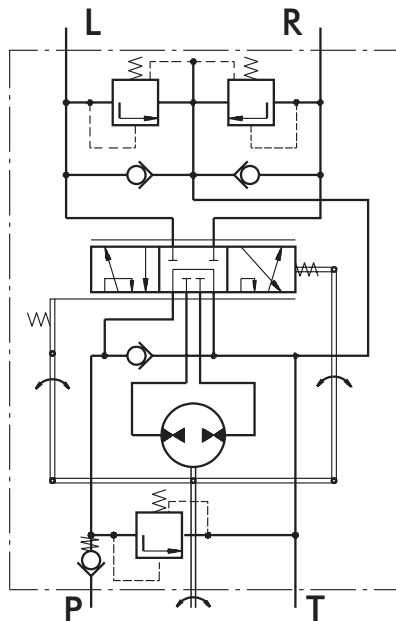
# HYDROSTATIC STEERING UNITS TYPE HKUS.../3, 4, 8 - Series 2



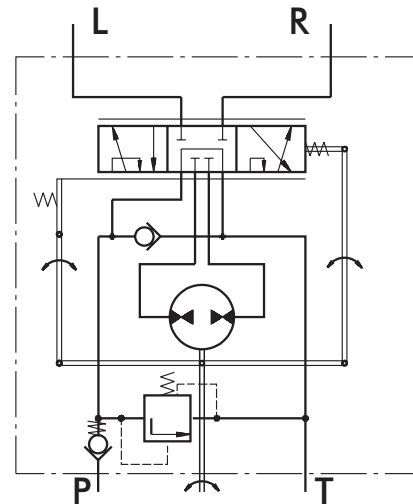
The HKUS Hydrostatic Steering unit is based on the HKU unit but has built-in relief and check valves. Thus M+S Hydraulic achieves one very compact steering unit which reduces the need for additional hydraulic components in the system.



"Open Center - Load Reaction"  
With Built-in Valves  
Version 3 - HKUS.../3



"Open Center - Non Load Reaction"  
With Built-in Valves  
Version 4 - HKUS.../4



"Open Center - Non Load Reaction"  
With Built-in Valve  
Version 8 - HKUS.../8

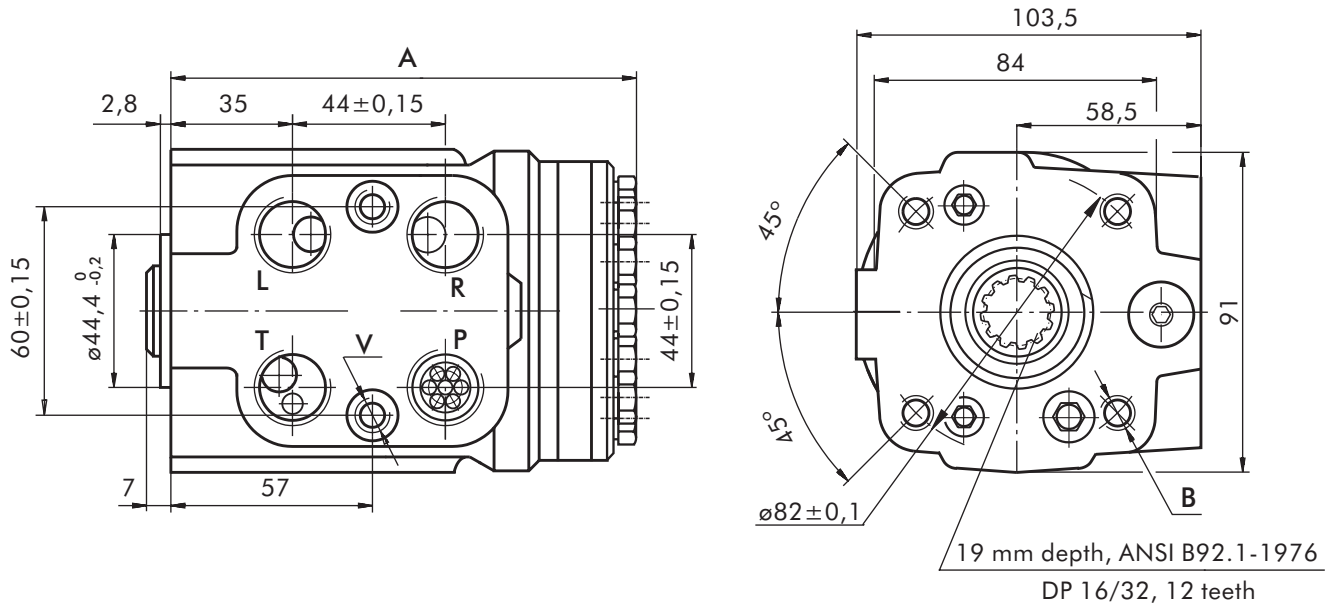
## SPECIFICATION DATA

Parameters	Type										
	HKUS 40/3,4,8	HKUS 50/3,4,8	HKUS 63/3,4,8	HKUS 80/3,4,8	HKUS 100/3,4,8	HKUS 125/3,4,8	HKUS 160/3,4,8	HKUS 200/3,4,8	HKUS 250/3,4,8	HKUS 320/3,4,8	HKUS 400/3,4,8
Displacement [cm <sup>3</sup> /rev]	39,6	49,5	65,6	79,2	99,0	123,8	158,4	198	247,5	316,8	396
Rated Flow [l/min]	4	5	6	9		12		17	24	30	40
Rated Pressure [bar]	160										
Relief Valve Pressure Settings* [bar]				80	100	125	150				
Shock Valves Pressure Settings** [bar]				140	160	180	200				
Max.Cont. Pressure in Line T - P <sub>T</sub> [bar]	25 ( 50 - for HKUS.../8 )										
Max.Torque at Servoamplifying [Nm]	6 ( by P <sub>T,max</sub> )										
Max.Torque w/o Servoamplifying [Nm]	120										
Weight, avg. [kg]	5,3	5,5	5,6	5,7	5,8	5,9	6,2	6,5	6,6	7,2	7,8
Dimension A [mm]	130,8	132,2	133,9	136,2	138,8	142,2	146,8	152,2	158,8	168,2	178,8

\* Pressure Settings are at Rated Flow (as in the table ) and viscosity 21 mm<sup>2</sup>/s (50° C).

\*\*Pressure Settings are at flow rate of 2 l/min and viscosity 21 mm<sup>2</sup>/s (50° C).

**DIMENSIONS AND MOUNTING DATA**

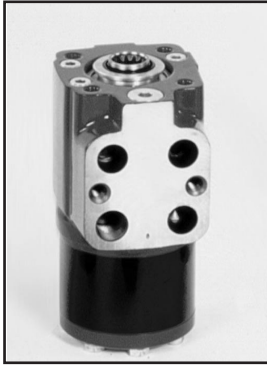


**THREADED PORTS**

code	Ports - P, T, R, L Thread	Column Mounting Thread - B	Valve Mounting Thread - V
-	G1/2 17 mm depth	4 x M10 18 mm depth	2 x M10x1 16 mm depth
<b>A</b>	3/4 - 16 UNF O-ring 17 mm depth	4x 3/8 - 16 UNC 15,7 mm depth	2 x 3/8 - 24 UNF 14,2 mm depth
<b>M</b>	M22x1,5 17 mm depth	4 x M10 18 mm depth	2 x M10x1 16 mm depth

\*Threaded Port **P** min 16 mm depth.

# HYDROSTATIC STEERING UNITS TYPE HKU(S).../5(T)(E)(TE)- Series 2



The HKU(S).../5(T)(E)(TE) range expands the steering units family of M+S Hydraulic with the "Closed Center - Non Reaction and Load Sensing Outlet" version (static hydraulic connection to the priority valve).

This range is manufactured in two versions; for modularly and pipe mounting and therefore were developed the two versions of priority (tracing) valves: PRD... and PRT...

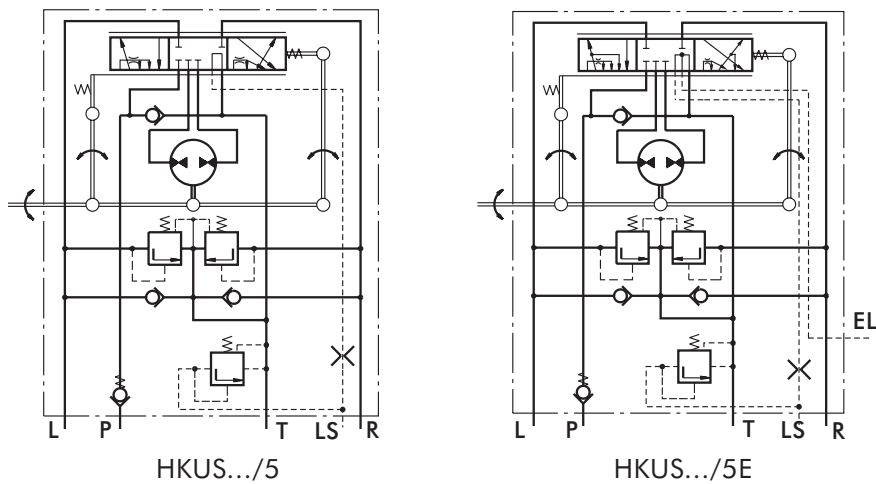
HKU.../5 is designed to be connected with priority valves with built-in relief valves for rated flow up to 160 l/min.

The control hydraulic circuits of the HKU(S).../5(T)(E)(TE) steering units were designed to ensure minimal energy consumption (energy losses) in various hydraulic systems such as those of: fork-lift trucks, agricultural and construction machines and others.

The HKUS.../5E and HKUS.../5TE are equipped with an electrohydraulic relay, mounted in the EL port, which supplies signal to the electric - control system. The relay can be pre-set to normally - open (N.O) or normally - closed (N.C) contacts, with control range from 0,1 to 50 bars. Upon customer's request the relay could be supplied with another type of fixing thread.

\*For operation in condition of Thermal Shock see the notes on page 6.

## Modularly Mounting



## Pipe Mounting

